

Study the Impact of Awareness of Risks Reduction for Manet Routing Attacks

Seyed Amin Ahmadi¹, Mahdi Hosseini², Prof. Avula.Damodaram³

¹Ph.D. Scholar Student in Computer Science and Engineering, Dept. Of Computer Science and Engineering, Jawaharlal Nehru Technological University Hyderabad (JNTUH), Hyderabad, Telengana, India

²Ph.D. Scholar Student In Structural Engineering, Dept. Of Civil Engineering, Jawaharlal Nehru Technological University Hyderabad (JNTUH), Hyderabad, Telengana, India

³Vice-Chancellor Sri Venkateswara University, Tirupati, Andhra Pradesh, India.
Faculty of Computer Science & Engineering at JNTU, Hyderabad

ABSTRACT: Mobile Ad-hoc Networks (MANET) have been highly vulnerable to attacks due to the dynamic nature of its network infrastructure. Among these attacks, routing attacks have received considerable attention since it could cause the most devastating damage to MANET. Even though there exist several intrusion response techniques to mitigate such critical attacks, existing solutions typically attempt to isolate malicious nodes based on binary or naïve fuzzy response decisions.

However, binary responses may result in the unexpected network partition, causing additional damages to the network infrastructure, and naïve fuzzy responses could lead to uncertainty in countering routing attacks in MANET. In this paper, we propose a risk-aware response mechanism to systematically cope with the identified routing attacks. Our risk-aware approach is based on an extended Dempster-Shafer mathematical theory of evidence introducing a notion of importance factors. In addition, our experiments demonstrate the effectiveness of our approach with the consideration of several performance metrics.

Key words: MANET, Network, Risk-Aware, Dempster-Shafer Mathematical Theory Of Evidence

I. INTRODUCTION

Mobile Ad-hoc Networks (MANET) are utilized to set up wireless communication in improvised environments without a predefined infrastructure or centralized administration. Therefore, MANET has been normally deployed in adverse and hostile environments where central authority point is not necessary. Another unique characteristic of MANET is the dynamic nature of its network topology which would be frequently changed due to the unpredictable mobility of nodes. Furthermore, each mobile node in MANET plays a router role while transmitting data over the network. Hence, any compromised nodes under an adversary's control could cause significant damage to the functionality and security of its network since the impact would propagate in performing routing tasks. Several work addressed the intrusion response actions in MANET by isolating uncooperative nodes based on the node reputation derived from their behaviors. Such a simple response against malicious nodes often neglects possible negative side effects involved with the response actions. In MANET scenario, improper countermeasures may cause the unexpected network partition, bringing additional damages to the network infrastructure. To address the above-mentioned critical issues, more flexible and adaptive response should be investigated.

II. SOFTWARE ENVIRONMENT

Java Technology

Java technology is both a programming language and a platform.

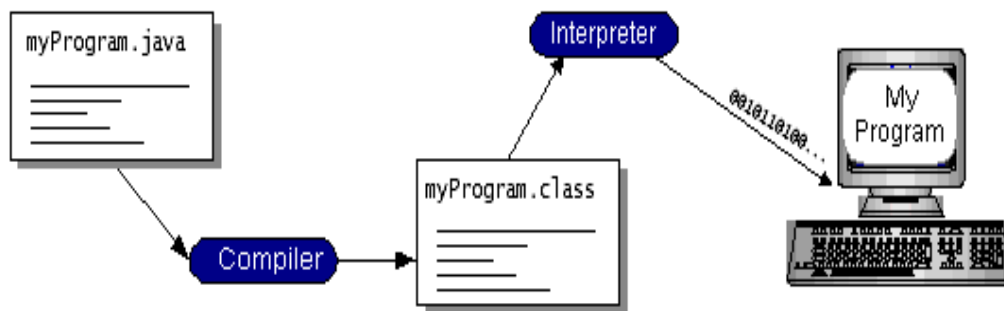
The Java Programming Language

The Java programming language is a high-level language that can be characterized by all of the following buzzwords:

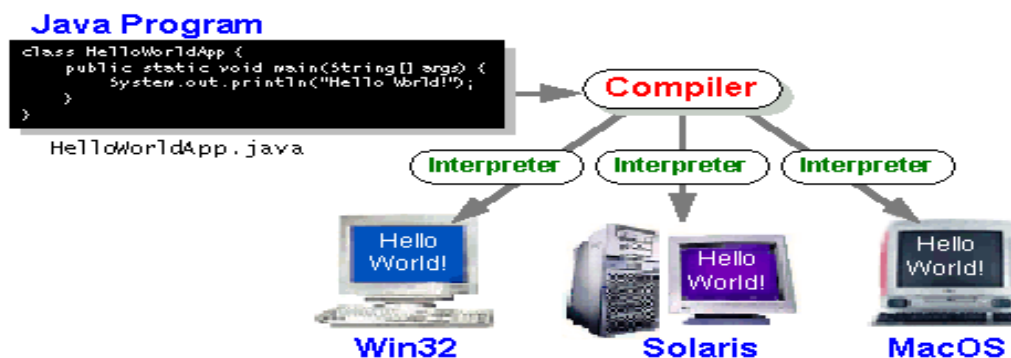
- Simple
- Architecture neutral
- Object oriented
- Portable

- Distributed
- High performance
- Interpreted
- Multithreaded
- Robust
- Dynamic
- Secure

With most programming languages, you either compile or interpret a program so that you can run it on your computer. The Java programming language is unusual in that a program is both compiled and interpreted. With the compiler, first you translate a program into an intermediate language called *Java byte codes* —the platform-independent codes interpreted by the interpreter on the Java platform. The interpreter parses and runs each Java byte code instruction on the computer. Compilation happens just once; interpretation occurs each time the program is executed. The following figure illustrates how this works.



You can think of Java byte codes as the machine code instructions for the *Java Virtual Machine* (Java VM). Every Java interpreter, whether it's a development tool or a Web browser that can run applets, is an implementation of the Java VM. Java byte codes help make “write once, run anywhere” possible. You can compile your program into byte codes on any platform that has a Java compiler. The byte codes can then be run on any implementation of the Java VM. That means that as long as a computer has a Java VM, the same program written in the Java programming language can run on Windows 2000, a Solaris workstation, or on an iMac.



The Java Platform

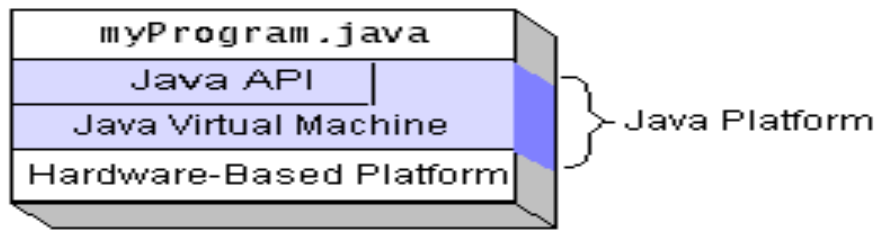
A *platform* is the hardware or software environment in which a program runs. We have already mentioned some of the most popular platforms like Windows 2000, Linux, Solaris, and MacOS. Most platforms can be described as a combination of the operating system and hardware. The Java platform differs from most other platforms in that it's a software-only platform that runs on top of other hardware-based platforms.

The Java platform has two components:

The Java Virtual Machine (Java VM)

Java Application Programming Interface (Java API)

You have already been introduced to the Java VM. It's the base for the Java platform and is ported onto various hardware-based platforms. The Java API is a large collection of ready-made software components that provide many useful capabilities, such as graphical user interface (GUI) widgets. The Java API is grouped into libraries of related classes and interfaces; these libraries are known as *packages*. The next section, What Can Java Technology Do? Highlights what functionality some of the packages in the Java API provide. The following figure depicts a program that's running on the Java platform. As the figure shows, the Java API and the virtual machine insulate the program from the hardware.

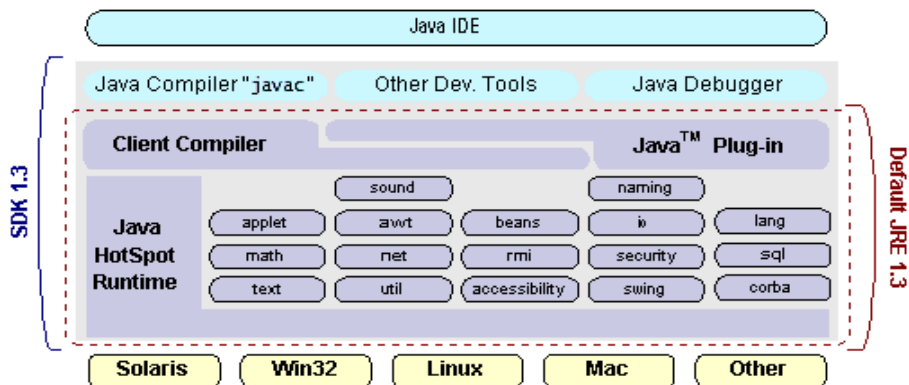


Native code is code that after you compile it, the compiled code runs on a specific hardware platform. As a platform-independent environment, the Java platform can be a bit slower than native code. However, smart compilers, well-tuned interpreters, and just-in-time byte code compilers can bring performance close to that of native code without threatening portability.

III. WHAT CAN JAVA TECHNOLOGY DO?

The most common types of programs written in the Java programming language are *applets* and *applications*. If you've surfed the Web, you're probably already familiar with applets. An applet is a program that adheres to certain conventions that allow it to run within a Java-enabled browser. However, the Java programming language is not just for writing cute, entertaining applets for the Web. The general-purpose, high-level Java programming language is also a powerful software platform. Using the generous API, you can write many types of programs. An application is a standalone program that runs directly on the Java platform. A special kind of application known as a *server* serves and supports clients on a network. Examples of servers are Web servers, proxy servers, mail servers, and print servers. Another specialized program is a *servlet*. A servlet can almost be thought of as an applet that runs on the server side. Java Servlets are a popular choice for building interactive web applications, replacing the use of CGI scripts. Servlets are similar to applets in that they are runtime extensions of applications. Instead of working in browsers, though, servlets run within Java Web servers, configuring or tailoring the server. How does the API support all these kinds of programs? It does so with packages of software components that provides a wide range of functionality. Every full implementation of the Java platform gives you the following features:

- **The essentials:** Objects, strings, threads, numbers, input and output, data structures, system properties, date and time, and so on.
 - **Applets:** The set of conventions used by applets.
 - **Networking:** URLs, TCP (Transmission Control Protocol), UDP (User Datagram Protocol) sockets, and IP (Internet Protocol) addresses.
 - **Internationalization:** Help for writing programs that can be localized for users worldwide. Programs can automatically adapt to specific locales and be displayed in the appropriate language.
 - **Security:** Both low level and high level, including electronic signatures, public and private key management, access control, and certificates.
 - **Software components:** Known as JavaBeans™, can plug into existing component architectures.
 - **Object serialization:** Allows lightweight persistence and communication via Remote Method Invocation (RMI).
 - **Java Database Connectivity (JDBC™):** Provides uniform access to a wide range of relational databases.
- The Java platform also has APIs for 2D and 3D graphics, accessibility, servers, collaboration, telephony, speech, animation, and more. The following figure depicts what is included in the Java 2 SDK.



How Will Java Technology Change My Life?

We can't promise you fame, fortune, or even a job if you learn the Java programming language. Still, it is likely to make your programs better and requires less effort than other languages. We believe that Java technology will help you do the following:

- **Get started quickly:** Although the Java programming language is a powerful object-oriented language, it's easy to learn, especially for programmers already familiar with C or C++.
- **Write less code:** Comparisons of program metrics (class counts, method counts, and so on) suggest that a program written in the Java programming language can be four times smaller than the same program in C++.
- **Write better code:** The Java programming language encourages good coding practices, and its garbage collection helps you avoid memory leaks. Its object orientation, its JavaBeans component architecture, and its wide-ranging, easily extendible API let you reuse other people's tested code and introduce fewer bugs.
- **Develop programs more quickly:** Your development time may be as much as twice as fast versus writing the same program in C++. Why? You write fewer lines of code and it is a simpler programming language than C++.
- **Avoid platform dependencies with 100% Pure Java:** You can keep your program portable by avoiding the use of libraries written in other languages. The 100% Pure Java™ Product Certification Program has a repository of historical process manuals, white papers, brochures, and similar materials online.
- **Write once, run anywhere:** Because 100% Pure Java programs are compiled into machine-independent byte codes, they run consistently on any Java platform.
- **Distribute software more easily:** You can upgrade applets easily from a central server. Applets take advantage of the feature of allowing new classes to be loaded "on the fly," without recompiling the entire program.

ODBC

Microsoft Open Database Connectivity (ODBC) is a standard programming interface for application developers and database systems providers. Before ODBC became a *de facto* standard for Windows programs to interface with database systems, programmers had to use **proprietary languages for each database they wanted to connect to**. Now, ODBC has made the choice of the database system almost irrelevant from a coding perspective, which is as it should be. Application developers have much more important things to worry about than the syntax that is needed to port their program from one database to another when business needs suddenly change. Through the ODBC Administrator in Control Panel, you can specify the particular database that is associated with a data source that an ODBC application program is written to use. Think of an ODBC data source as a door with a name on it. Each door will lead you to a particular database. For example, the data source named Sales Figures might be a SQL Server database, whereas the Accounts Payable data source could refer to an Access database. The physical database referred to by a data source can reside anywhere on the LAN. The ODBC system files are not installed on your system by Windows 95. Rather, they are installed when you setup a separate database application, such as SQL Server Client or Visual Basic 4.0. When the ODBC icon is installed in Control Panel, it uses a file called ODBCINST.DLL. It is also possible to administer your ODBC data sources through a stand-alone program called ODBCADM.EXE. There is a 16-bit and a 32-bit version of this program and each maintains a separate list of ODBC data sources. From a programming perspective, the beauty of ODBC is that the application can be written to use the same set of function calls to interface with any data source, regardless of the database vendor. The source code of the application doesn't change whether it talks to Oracle or SQL Server. We only mention these two as an example. There are ODBC drivers available for several dozen popular database systems. Even Excel spreadsheets and plain text files can be turned into data sources. The operating system uses the Registry information written by ODBC Administrator to determine which low-level ODBC drivers are needed to talk to the data source (such as the interface to Oracle or SQL Server). The loading of the ODBC drivers is transparent to the ODBC application program. In a client/server environment, the ODBC API even handles many of the network issues for the application programmer. The advantages of this scheme are so numerous that you are probably thinking there must be some catch. The only disadvantage of ODBC is that it isn't as efficient as talking directly to the native database interface. ODBC has had many detractors make the charge that it is too slow. Microsoft has always claimed that the critical factor in performance is the quality of the driver software that is used. In our humble opinion, this is true. The availability of good ODBC drivers has improved a great deal recently. And anyway, the criticism about performance is somewhat analogous to those who said that compilers would never match the speed of pure assembly language. Maybe not, but the compiler (or ODBC) gives you the opportunity to write cleaner programs, which means you finish sooner. Meanwhile, computers get faster every year.

JDBC

In an effort to set an independent database standard API for Java; Sun Microsystems developed Java Database Connectivity, or JDBC. JDBC offers a generic SQL database access mechanism that provides a consistent interface to a variety of RDBMSs. This consistent interface is achieved through the use of “plug-in” database connectivity modules, or *drivers*. If a database vendor wishes to have JDBC support, he or she must provide the driver for each platform that the database and Java run on. To gain a wider acceptance of JDBC, Sun based JDBC’s framework on ODBC. As you discovered earlier in this chapter, ODBC has widespread support on a variety of platforms. Basing JDBC on ODBC will allow vendors to bring JDBC drivers to market much faster than developing a completely new connectivity solution. JDBC was announced in March of 1996. It was released for a 90 day public review that ended June 8, 1996. Because of user input, the final JDBC v1.0 specification was released soon after. The remainder of this section will cover enough information about JDBC for you to know what it is about and how to use it effectively. This is by no means a complete overview of JDBC. That would fill an entire book.

JDBC Goals

Few software packages are designed without goals in mind. JDBC is one that, because of its many goals, drove the development of the API. These goals, in conjunction with early reviewer feedback, have finalized the JDBC class library into a solid framework for building database applications in Java. The goals that were set for JDBC are important. They will give you some insight as to why certain classes and functionalities behave the way they do. The eight design goals for JDBC are as follows:

SQL Level API

The designers felt that their main goal was to define a SQL interface for Java. Although not the lowest database interface level possible, it is at a low enough level for higher-level tools and APIs to be created. Conversely, it is at a high enough level for application programmers to use it confidently. Attaining this goal allows for future tool vendors to “generate” JDBC code and to hide many of JDBC’s complexities from the end user.

SQL Conformance

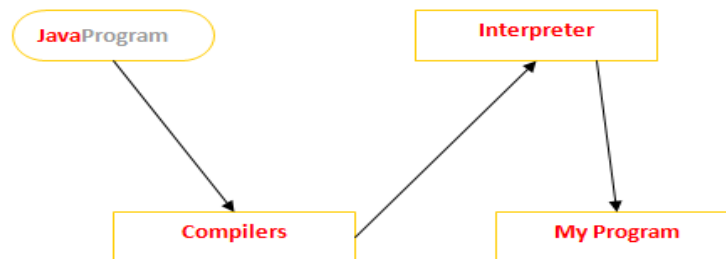
SQL syntax varies as you move from database vendor to database vendor. In an effort to support a wide variety of vendors, JDBC will allow any query statement to be passed through it to the underlying database driver. This allows the connectivity module to handle non-standard functionality in a manner that is suitable for its users.

- JDBC must be implemental on top of common database interfaces**
The JDBC SQL API must “sit” on top of other common SQL level APIs. This goal allows JDBC to use existing ODBC level drivers by the use of a software interface. This interface would translate JDBC calls to ODBC and vice versa.
- Provide a Java interface that is consistent with the rest of the Java system**
Because of Java’s acceptance in the user community thus far, the designers feel that they should not stray from the current design of the core Java system.
- Keep it simple**
This goal probably appears in all software design goal listings. JDBC is no exception. Sun felt that the design of JDBC should be very simple, allowing for only one method of completing a task per mechanism. Allowing duplicate functionality only serves to confuse the users of the API.
- Use strong, static typing wherever possible**
Strong typing allows for more error checking to be done at compile time; also, less error appear at runtime.
- Keep the common cases simple**
Because more often than not, the usual SQL calls used by the programmer are simple SELECT’s, INSERT’s, DELETE’s and UPDATE’s, these queries should be simple to perform with JDBC. However, more complex SQL statements should also be possible.

Finally we decided to proceed the implementation using Java Networking. And for dynamically updating the cache table we go for MS Access data base. Java ha two things: a programming language and a platform. Java is a high-level programming language that is all of the following

- Simple
- Object-oriented
- Distributed
- Interpreted
- Robust
- Architecture-neutral
- Portable
- High-performance
- Multithreaded
- Dynamic

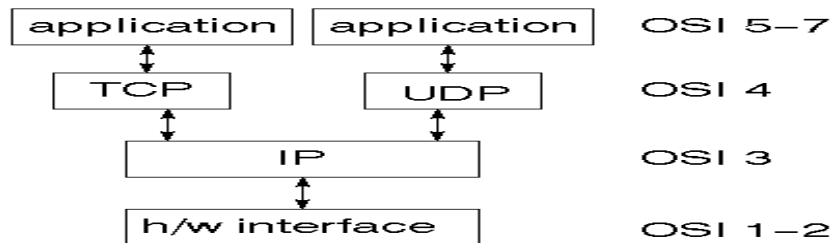
Java is also unusual in that each Java program is both compiled and interpreted. With a compiler you translate a Java program into an intermediate language called Java byte codes the platform-independent code instruction is passed and run on the computer. Compilation happens just once; interpretation occurs each time the program is executed. The figure illustrates how this works.



You can think of Java byte codes as the machine code instructions for the Java Virtual Machine (Java VM). Every Java interpreter, whether it's a Java development tool or a Web browser that can run Java applets, is an implementation of the Java VM. The Java VM can also be implemented in hardware. Java byte codes help make "write once, run anywhere" possible. You can compile your Java program into byte codes on my platform that has a Java compiler. The byte codes can then be run any implementation of the Java VM. For example, the same Java program can run Windows NT, Solaris, and Macintosh.

IV. NETWORKING

TCP/IP stack, The TCP/IP stack is shorter than the OSI one



TCP is a connection-oriented protocol; UDP (User Datagram Protocol) is a connectionless protocol.

IP datagram's

The IP layer provides a connectionless and unreliable delivery system. It considers each datagram independently of the others. Any association between datagram must be supplied by the higher layers. The IP layer supplies a checksum that includes its own header. The header includes the source and destination addresses. The IP layer handles routing through an Internet. It is also responsible for breaking up large datagram into smaller ones for transmission and reassembling them at the other end.

UDP

UDP is also connectionless and unreliable. What it adds to IP is a checksum for the contents of the datagram and port numbers. These are used to give a client/server model - see later.

TCP

TCP supplies logic to give a reliable connection-oriented protocol above IP. It provides a virtual circuit that two processes can use to communicate.

Internet addresses

In order to use a service, you must be able to find it. The Internet uses an address scheme for machines so that they can be located. The address is a 32 bit integer which gives the IP address. This encodes a network ID and more addressing. The network ID falls into various classes according to the size of the network address.

Network address

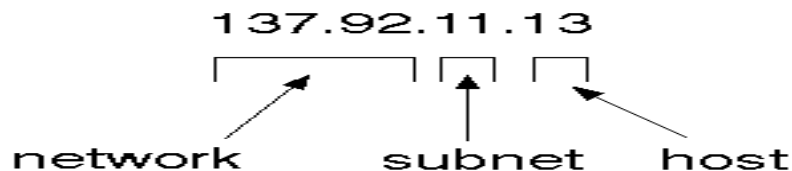
Class A uses 8 bits for the network address with 24 bits left over for other addressing. Class B uses 16 bit network addressing. Class C uses 24 bit network addressing and class D uses all 32.

Subnet address

Internally, the UNIX network is divided into sub networks. Building 11 is currently on one sub network and uses 10-bit addressing, allowing 1024 different hosts.

Host address

8 bits are finally used for host addresses within our subnet. This places a limit of 256 machines that can be on the subnet.

Total address

The 32 bit address is usually written as 4 integers separated by dots.

Port addresses

A service exists on a host, and is identified by its port. This is a 16 bit number. To send a message to a server, you send it to the port for that service of the host that it is running on. This is not location transparency! Certain of these ports are "well known".

Sockets

A socket is a data structure maintained by the system to handle network connections. A socket is created using the call socket. It returns an integer that is like a file descriptor. In fact, under Windows, this handle can be used with Read File and Write File functions.

```
#include <sys/types.h>
#include <sys/socket.h>
int socket(int family, int type, int protocol);
```

Here "family" will be AF_INET for IP communications, protocol will be zero, and type will depend on whether TCP or UDP is used. Two processes wishing to communicate over a network create a socket each. These are similar to two ends of a pipe - but the actual pipe does not yet exist.

JFree Chart

JFree Chart is a free 100% Java chart library that makes it easy for developers to display professional quality charts in their applications. JFree Chart's extensive feature set includes:

A consistent and well-documented API, supporting a wide range of chart types;

A flexible design that is easy to extend, and targets both server-side and client-side applications;

Support for many output types, including Swing components, image files (including PNG and JPEG), and vector graphics file formats (including PDF, EPS and SVG);

JFree Chart is "open source" or, more specifically, free software. It is distributed under the terms of the GNU Lesser General Public Licence (LGPL), which permits use in proprietary applications.

1. Map Visualizations

Charts showing values that relate to geographical areas. Some examples include: (a) population density in each state of the United States, (b) income per capita for each country in Europe, (c) life expectancy in each country of the world. The tasks in this project include: Sourcing freely redistributable vector outlines for the countries of the world, states/provinces in particular countries (USA in particular, but also other areas); Creating an appropriate dataset interface (plus default implementation), a rendered, and integrating this with the existing XYPlot class in JFreeChart; Testing, documenting, testing some more, documenting some more.

2. Time Series Chart Interactivity

Implement a new (to JFreeChart) feature for interactive time series charts --- to display a separate control that shows a small version of ALL the time series data, with a sliding "view" rectangle that allows you to select the subset of the time series data to display in the main chart.

Dashboards

There is currently a lot of interest in dashboard displays. Create a flexible dashboard mechanism that supports a subset of JFreeChart chart types (dials, pies, thermometers, bars, and lines/time series) that can be delivered easily via both Java Web Start and an applet.

Property Editors

The property editor mechanism in JFree Chart only handles a small subset of the properties that can be set for charts. Extend (or reimplement) this mechanism to provide greater end-user control over the appearance of the charts.

V. TOMCAT 6.0 WEB SERVER

Tomcat is an open source web server developed by Apache Group. Apache Tomcat is the servlet container that is used in the official Reference Implementation for the Java Servlet and JavaServer Pages technologies. The Java Servlet and Java Server Pages specifications are developed by Sun under the Java Community Process. Web Servers like Apache Tomcat support only web components while an application server supports web components as well as business components (BEAs Weblogic, is one of the popular application server). To develop a web application with jsp/servlet install any web server like JRun, Tomcat etc to run your application.

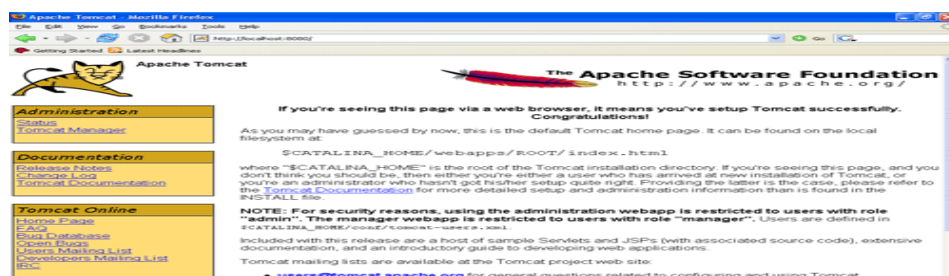


Figure 1: Tomcat Webservice

System Testing

The purpose of testing is to discover errors. Testing is the process of trying to discover every conceivable fault or weakness in a work product. It provides a way to check the functionality of components, sub assemblies, assemblies and/or a finished product. It is the process of exercising software with the intent of ensuring that the Software system meets its requirements and user expectations and does not fail in an unacceptable manner. There are various types of test. Each test type addresses a specific testing requirement.

Types of Tests

Unit Testing

Unit testing involves the design of test cases that validate that the internal program logic is functioning properly, and that program inputs produce valid outputs. All decision branches and internal code flow should be validated. It is the testing of individual software units of the application. It is done after the completion of an individual unit before integration. This is a structural testing, that relies on knowledge of its construction and is invasive. Unit tests perform basic tests at component level and test a specific business process, application, and/or system configuration. Unit tests ensure that each unique path of a business process performs accurately to the documented specifications and contains clearly defined inputs and expected results.

Integration testing

Integration tests are designed to test integrated software components to determine if they actually run as one program. Testing is event driven and is more concerned with the basic outcome of screens or fields. Integration tests demonstrate that although the components were individually satisfactory, as shown by successfully unit testing, the combination of components is correct and consistent. Integration testing is specifically aimed at exposing the problems that arise from the combination of components.

Functional test

Functional tests provide systematic demonstrations that functions tested are available as specified by the business and technical requirements, system documentation, and user manuals. Functional testing is centered on the following items:

- Valid Input : identified classes of valid input must be accepted.
- Invalid Input : identified classes of invalid input must be rejected.

Functions : identified functions must be exercised.
Output : identified classes of application outputs must be exercised.
Systems/Procedures: interfacing systems or procedures must be invoked.

Organization and preparation of functional tests is focused on requirements, key functions, or special test cases. In addition, systematic coverage pertaining to identify Business process flows; data fields, predefined processes, and successive processes must be considered for testing. Before functional testing is complete, additional tests are identified and the effective value of current tests is determined.

System Test

System testing ensures that the entire integrated software system meets requirements. It tests a configuration to ensure known and predictable results. An example of system testing is the configuration oriented system integration test. System testing is based on process descriptions and flows, emphasizing pre-driven process links and integration points.

White Box Testing

White Box Testing is a testing in which in which the software tester has knowledge of the inner workings, structure and language of the software, or at least its purpose. It is used to test areas that cannot be reached from a black box level.

Black Box Testing

Black Box Testing is testing the software without any knowledge of the inner workings, structure or language of the module being tested. Black box tests, as most other kinds of tests, must be written from a definitive source document, such as specification or requirements document, such as specification or requirements document. It is a testing in which the software under test is treated, as a black box .you cannot “see” into it. The test provides inputs and responds to outputs without considering how the software works.

Unit Testing

Unit testing is usually conducted as part of a combined code and unit test phase of the software lifecycle, although it is not uncommon for coding and unit testing to be conducted as two distinct phases.

Test strategy and approach

Field testing will be performed manually and functional tests will be written in detail.

Test objectives

- All field entries must work properly.
- Pages must be activated from the identified link.
- The entry screen, messages and responses must not be delayed.

Features to be tested

- Verify that the entries are of the correct format
- No duplicate entries should be allowed
- All links should take the user to the correct page.

Integration Testing

Software integration testing is the incremental integration testing of two or more integrated software components on a single platform to produce failures caused by interface defects. The task of the integration test is to check that components or software applications, e.g. components in a software system or – one step up – software applications at the company level – interact without error.

Test Results: All the test cases mentioned above passed successfully. No defects encountered.

Acceptance Testing

User Acceptance Testing is a critical phase of any project and requires significant participation by the end user. It also ensures that the system meets the functional requirements.

Test Results: All the test cases mentioned above passed successfully. No defects encountered.

VI. METHODOLOGY

Implementation

Implementation is the stage of the project when the theoretical design is turned out into a working system. Thus it can be considered to be the most critical stage in achieving a successful new system and in giving the user, confidence that the new system will work and be effective. The implementation stage involves careful planning, investigation of the existing system and its constraints on implementation, designing of methods to achieve changeover and evaluation of changeover methods.

Modules:

- **Evidence collection**
- **Risk assessment**
- **Decision making**
- **Intrusion response**
- **Routing table recovery**

1) Evidence collection

In this step, Intrusion Detection System (IDS) gives an attack alert with a confidence value, and then Routing Table Change Detector (RTCD) runs to figure out how many changes on routing table are caused by the attack.

2) Risk assessment

Alert confidence from IDS and the routing table changing information would be further considered as independent evidences for risk calculation and combined with the extended D-S theory. Risk of countermeasures is calculated as well during a risk assessment phase. Based on the risk of attacks and the risk of countermeasures, the entire risk of an attack could be figured out.

3) Decision making

The adaptive decision module provides a flexible response decision-making mechanism, which takes risk estimation and risk tolerance into account. To adjust temporary isolation level, a user can set different thresholds to fulfill her goal.

4) Intrusion response

With the output from risk assessment and decision-making module, the corresponding response actions, including routing table recovery and node isolation, are carried out to mitigate attack damages in a distributed manner.

5) Routing table recovery

Routing table recovery is an indispensable response and should serve as the first response method after successful detection of attacks. In proactive routing protocols like OLSR, routing table recovery does not bring any additional overhead since it periodically goes with routing control messages. Also, as long as the detection of attack is positive, this response causes no negative impacts on existing routing operations.

We have to analysis the **Secure computing...**

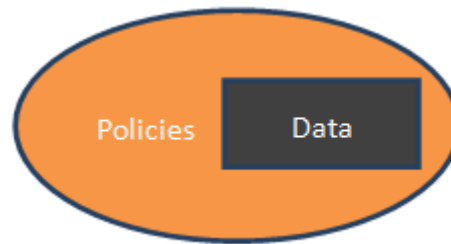
Data centre Security?

- Professional Security staff utilizing video surveillance, state of the art intrusion detection systems, and other electronic means.
- When an employee no longer has a business need to access datacenter his privileges to access datacenter should be immediately revoked.
- All physical and electronic access to data centers by employees should be logged and audited routinely.
- Audit tools so that users can easily determine how their data is stored, protected, used, and verify policy enforcement.

Data Location:

- When user uses the cloud, user probably won't know exactly where your data is hosted, what country it will be stored in?
- Data should be stored and processed only in specific jurisdictions as define by user.
- Provider should also make a contractual commitment to obey local privacy requirements on behalf of their customers,

- Data-centered policies that are generated when a user provides personal or sensitive information, that travels with that information throughout its lifetime to ensure that the information is used only in accordance with the policy



Backups of Data:

- Data store in database of provider should be redundantly store in multiple physical locations.
- Data that is generated during running of program on instances is all customer data and therefore provider should not perform backups.
- Control of Administrator on Databases.

Data Sanitization:

- Sanitization is the process of removing sensitive information from a storage device.
- What happens to data stored in a cloud computing environment once it has passed its user's "use by date"
- What data sanitization practices does the cloud computing service provider propose to implement for redundant and retiring data storage devices as and when these devices are retired or taken out of service.

Network Security:

- **Denial of Service:** where servers and networks are brought down by a huge amount of network traffic and users are denied the access to a certain Internet based service.
- **Like DNS Hacking,** Routing Table "Poisoning", XDoS attacks
- **QoS Violation:** through congestion, delaying or dropping packets, or through resource hacking.
- **Man in the Middle Attack:** To overcome it always use SSL
- **IP Spoofing:** Spoofing is the creation of TCP/IP packets using somebody else's IP address.
- **Solution:** Infrastructure will not permit an instance to send traffic with a source IP or MAC address other than its own.

How secure is encryption Scheme:

- Is it possible for all of my data to be fully encrypted?
- What algorithms are used?
- Who holds, maintains and issues the keys? Problem:
- Encryption accidents can make data totally unusable.
- Encryption can complicate availability Solution
- The cloud provider should provide evidence that encryption schemes were designed and tested by experienced specialists.

Information Security:

- Security related to the information exchanged between different hosts or between hosts and users.
- This issues pertaining to **secure communication, authentication, and issues concerning single sign on and delegation.**
- Secure communication issues include those security concerns that arise during the communication between two entities.
- These include confidentiality and integrity issues. Confidentiality indicates that all data sent by users should be accessible to only "legitimate" receivers, and integrity indicates that all data received should only be sent/modified by "legitimate" senders.
- **Solution:** public key encryption, X.509 certificates, and the Secure Sockets Layer (SSL) enables secure authentication and communication over computer networks.

Input Design

The input design is the link between the information system and the user. It comprises the developing specification and procedures for data preparation and those steps are necessary to put transaction data in to a usable form for processing can be achieved by inspecting the computer to read data from a written or printed

document or it can occur by having people keying the data directly into the system. The design of input focuses on controlling the amount of input required, controlling the errors, avoiding delay, avoiding extra steps and keeping the process simple. The input is designed in such a way so that it provides security and ease of use with retaining the privacy. Input Design considered the following things:

- What data should be given as input?
- How the data should be arranged or coded?
- The dialog to guide the operating personnel in providing input.
- Methods for preparing input validations and steps to follow when error occur.

Objectives

1. Input Design is the process of converting a user-oriented description of the input into a computer-based system. This design is important to avoid errors in the data input process and show the correct direction to the management for getting correct information from the computerized system.
2. It is achieved by creating user-friendly screens for the data entry to handle large volume of data. The goal of designing input is to make data entry easier and to be free from errors. The data entry screen is designed in such a way that all the data manipulates can be performed. It also provides record viewing facilities.
3. When the data is entered it will check for its validity. Data can be entered with the help of screens. Appropriate messages are provided as when needed so that the user will not be in maize of instant. Thus the objective of input design is to create an input layout that is easy to follow.

Output Design

A quality output is one, which meets the requirements of the end user and presents the information clearly. In any system results of processing are communicated to the users and to other system through outputs. In output design it is determined how the information is to be displaced for immediate need and also the hard copy output. It is the most important and direct source information to the user. Efficient and intelligent output design improves the system's relationship to help user decision-making.

1. Designing computer output should proceed in an organized, well thought out manner; the right output must be developed while ensuring that each output element is designed so that people will find the system can use easily and effectively. When analysis design computer output, they should Identify the specific output that is needed to meet the requirements.
2. Select methods for presenting information.
3. Create document, report, or other formats that contain information produced by the system.

The output form of an information system should accomplish one or more of the following objectives.

- ❖ Convey information about past activities, current status or projections of the
- ❖ Future.
- ❖ Signal important events, opportunities, problems, or warnings.
- ❖ Trigger an action.
- ❖ Confirm an action.

System Design

Data Flow Diagram / Use Case Diagram / Flow Diagram

The DFD is also called as bubble chart. It is a simple graphical formalism that can be used to represent a system in terms of the input data to the system, various processing carried out on these data, and the output data is generated by the system.

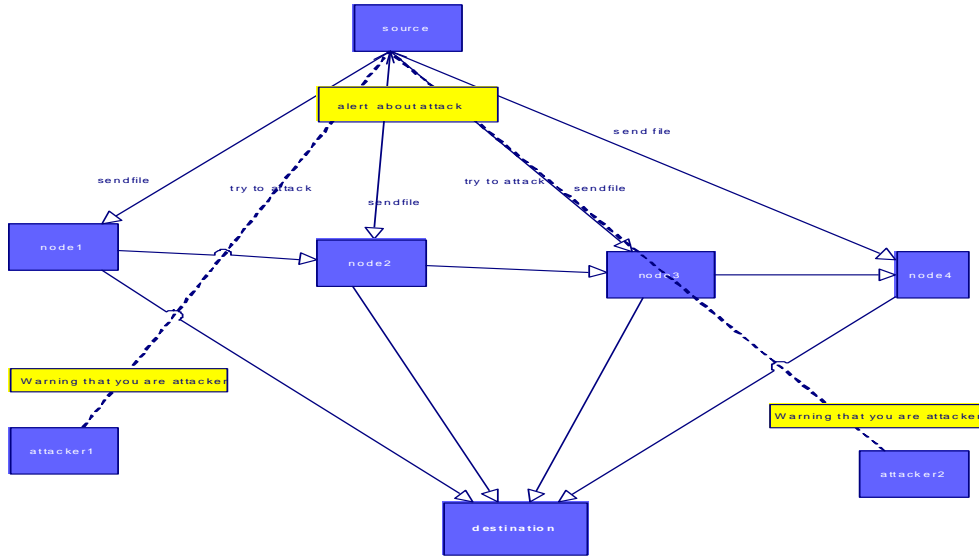


Figure 2: Data Flow

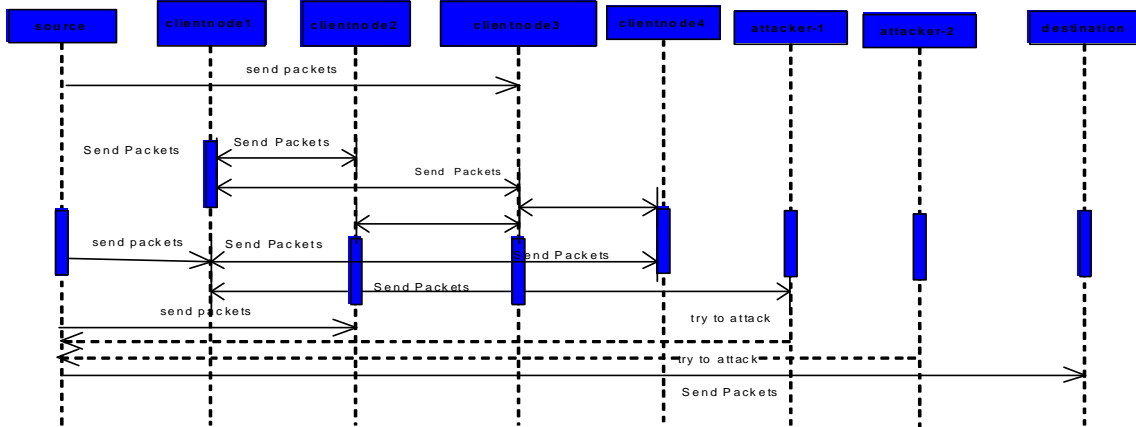


Figure 3: Sequence Diagram

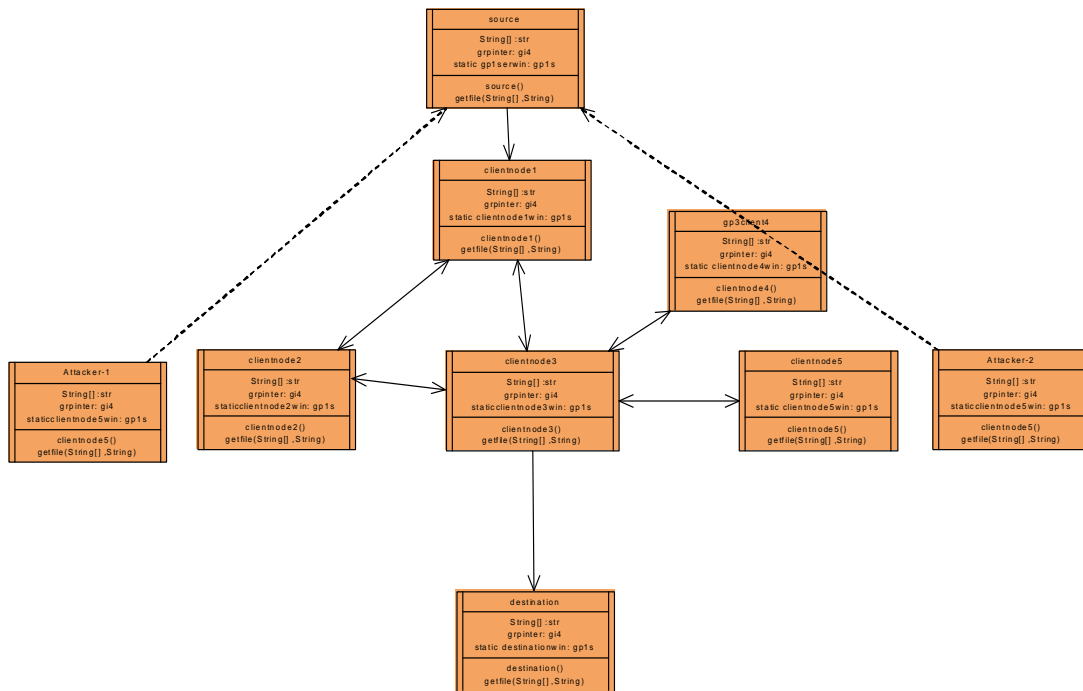


Figure 4: Class Diagram

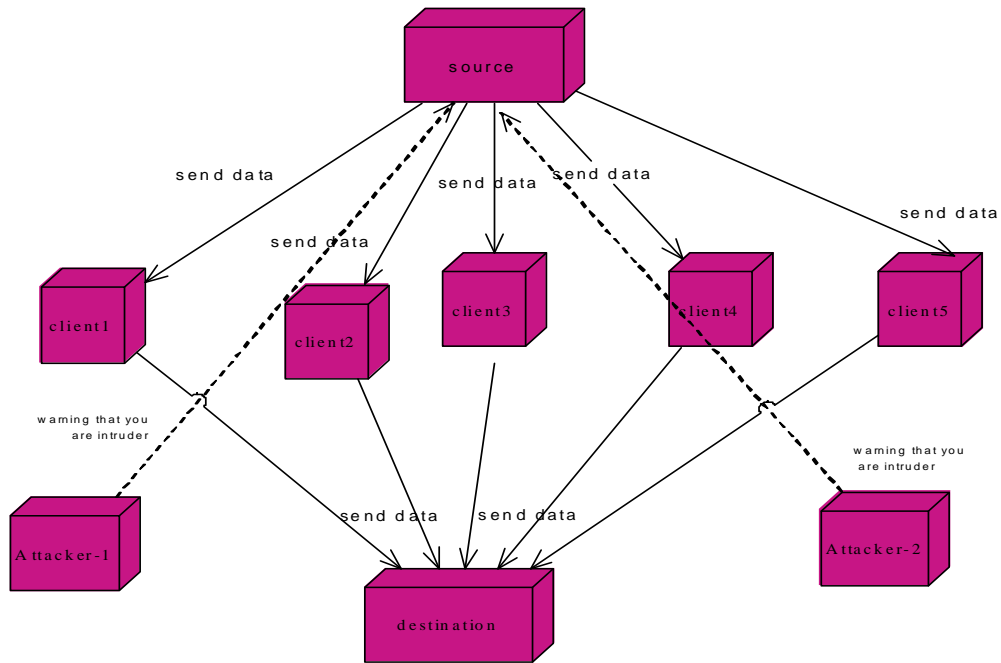


Figure 5: Component Diagram

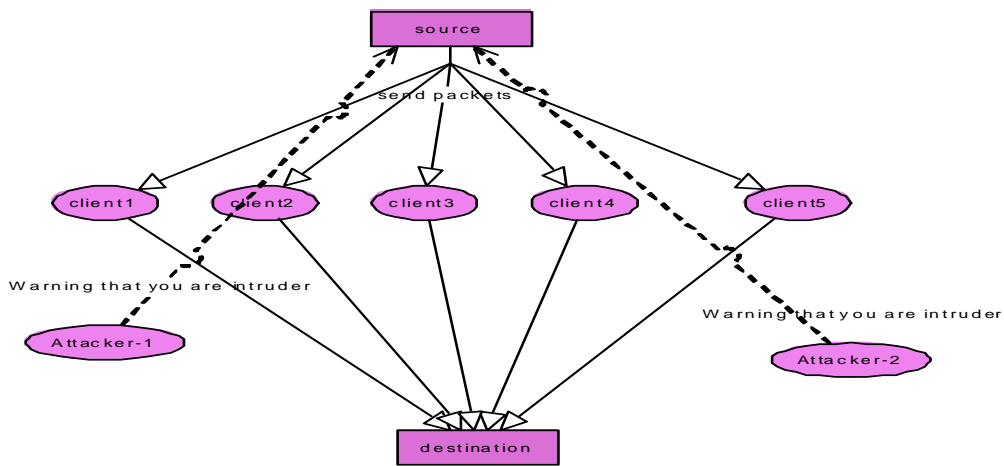


Figure 6: Use case Diagram

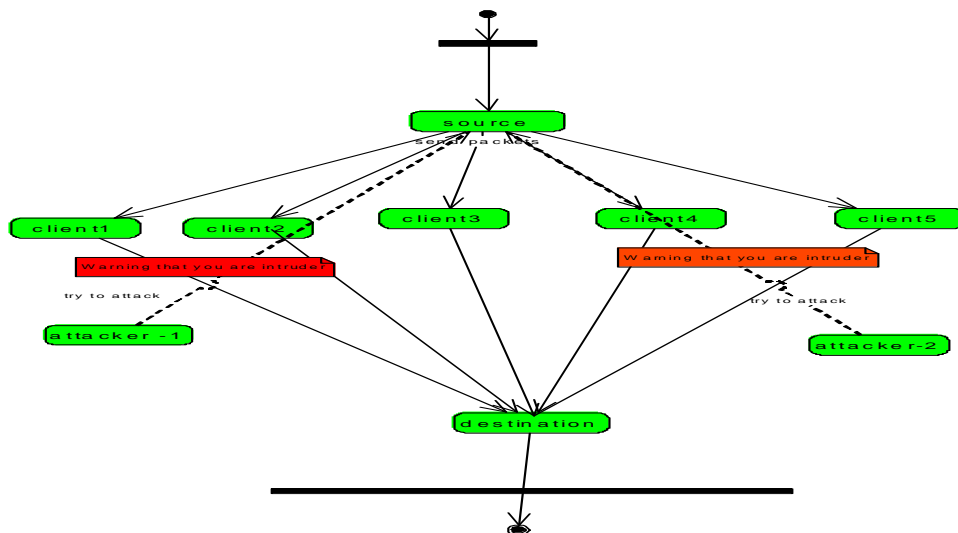


Figure 7: Activity Diagram

System Analysis

Existing System

Several work addressed the intrusion response actions in MANET by isolating uncooperative nodes based on the node reputation derived from their behaviors. Such a simple response against malicious nodes often neglects possible negative side effects involved with the response actions. In MANET scenario, improper countermeasures may cause the unexpected network partition, bringing additional damages to the network infrastructure. To address the above-mentioned critical issues, more flexible and adaptive response should be investigated. The notion of risk can be adopted to support more adaptive responses to routing attacks in MANET. Subjective knowledge could be retrieved from previous experience and objective evidence could be obtained from observation while logical reasoning requires a formal foundation. Wang et al. proposed a naïve fuzzy cost-sensitive intrusion response solution for MANET. Their cost model took subjective knowledge and objective evidence into account but omitted a seamless combination of two properties with logical reasoning.

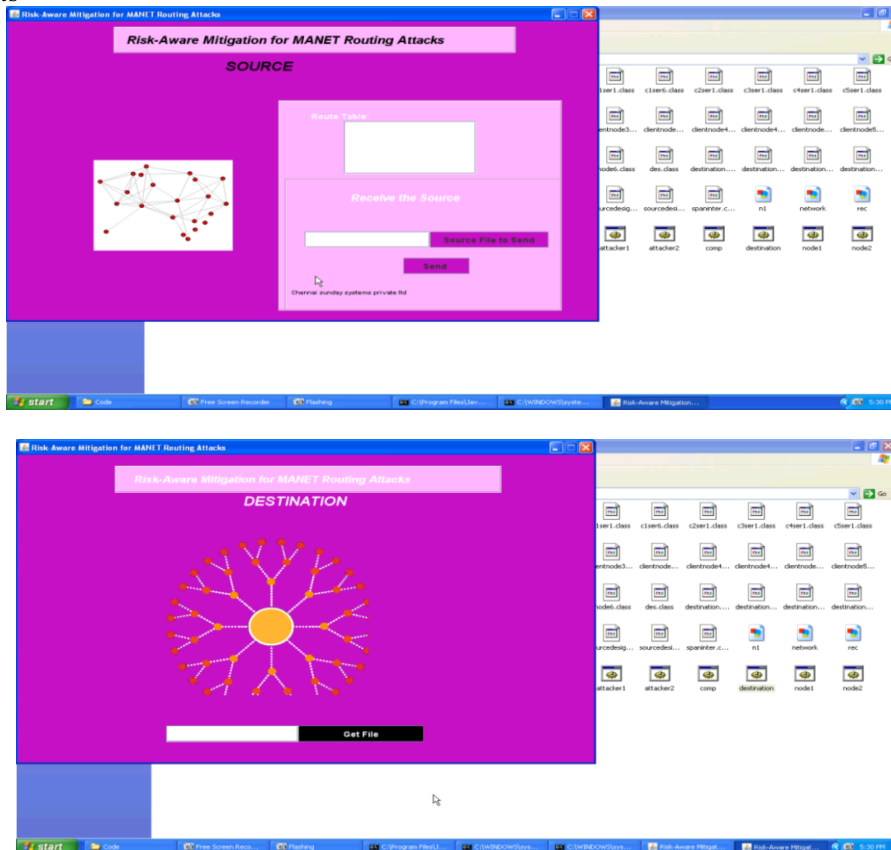
Disadvantage:

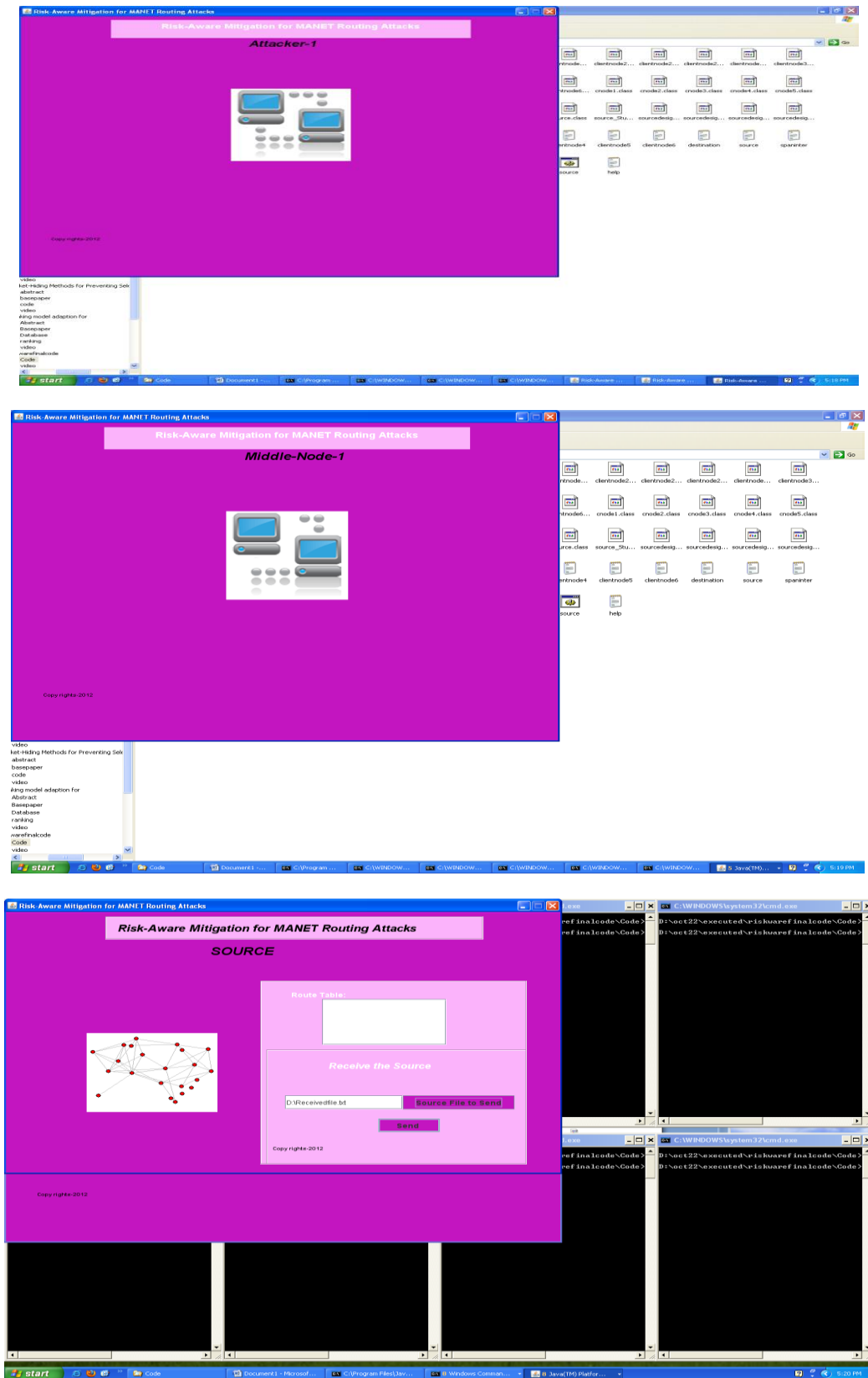
However, risk assessment is still a nontrivial, challenging problem due to its involvements of subjective knowledge, objective evidence, and logical reasoning.

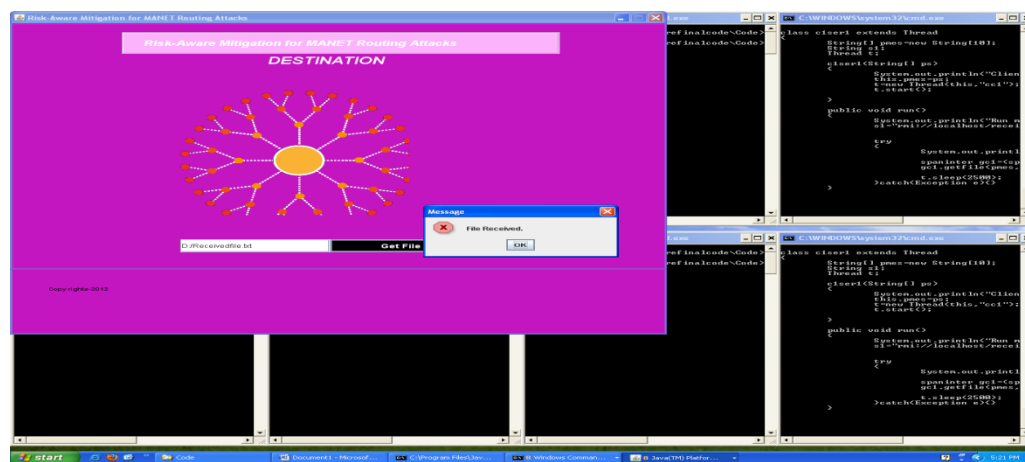
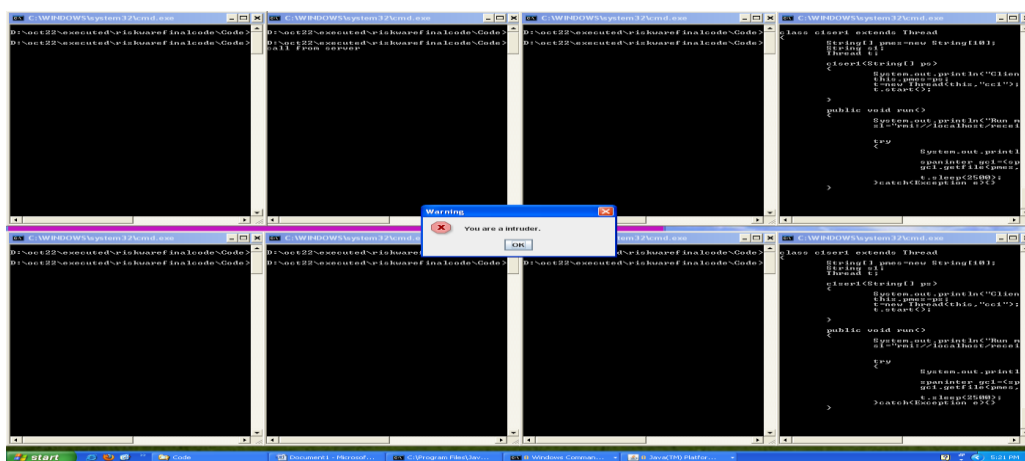
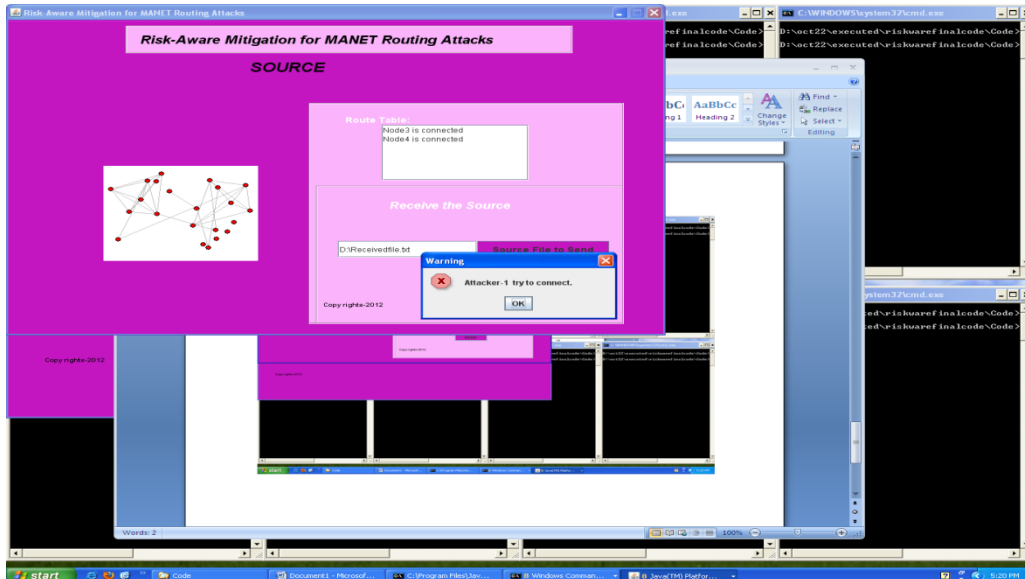
Proposed System

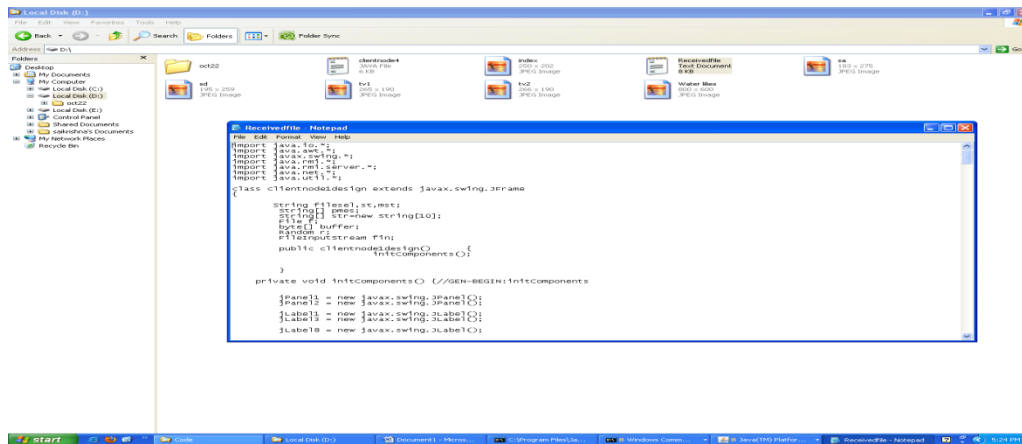
We formally propose an extended D-S evidence model with importance factors and articulate expected properties for Dempster’s rule of combination with importance factors (DRCIF). Our Dempster’s rule of combination with importance factors is nonassociative and weighted, which has not been addressed in the literature. We propose an adaptive risk-aware response mechanism with the extended D-S evidence model, considering damages caused by both attacks and countermeasures. The adaptiveness of our mechanism allows us to systematically cope with MANET routing attacks. We evaluate our response mechanism against representative attack scenarios and experiments. Our results clearly demonstrate the effectiveness and scalability of our risk-aware approach.

Sample screens









VII. DISCUSSION ON RESULTS

System Study

Feasibility Study

The feasibility of the project is analyzed in this phase and business proposal is put forth with a very general plan for the project and some cost estimates. During system analysis the feasibility study of the proposed system is to be carried out. This is to ensure that the proposed system is not a burden to the company. For feasibility analysis, some understanding of the major requirements for the system is essential. Three key considerations involved in the feasibility analysis are

- ◆ ECONOMICAL FEASIBILITY
- ◆ TECHNICAL FEASIBILITY
- ◆ SOCIAL FEASIBILITY

Economical Feasibility

This study is carried out to check the economic impact that the system will have on the organization. The amount of fund that the company can pour into the research and development of the system is limited. The expenditures must be justified. Thus the developed system as well within the budget and this was achieved because most of the technologies used are freely available. Only the customized products had to be purchased.

Technical Feasibility

This study is carried out to check the technical feasibility, that is, the technical requirements of the system. Any system developed must not have a high demand on the available technical resources. This will lead to high demands on the available technical resources. This will lead to high demands being placed on the client. The developed system must have a modest requirement, as only minimal or null changes are required for implementing this system.

Social Feasibility

The aspect of study is to check the level of acceptance of the system by the user. This includes the process of training the user to use the system efficiently. The user must not feel threatened by the system, instead must accept it as a necessity. The level of acceptance by the users solely depends on the methods that are employed to educate the user about the system and to make him familiar with it. His level of confidence must be raised so that he is also able to make some constructive criticism, which is welcomed, as he is the final user of the system.

VIII. CONCLUSION

We have proposed a risk-aware response solution for mitigating MANET routing attacks. Especially, our approach considered the potential damages of attacks and countermeasures. In order to measure the risk of both attacks and countermeasures, we extended Dempster-Shafer theory of evidence with a notion of importance factors. Based on several metrics, we also investigated the performance and practicality of our approach and the experiment results clearly demonstrated the effectiveness and scalability of our risk-aware approach. Based on the promising results obtained through these experiments, we would further seek more systematic way to accommodate node reputation and attack frequency in our adaptive decision model.

REFERENCES

- [1]. Y. Sun, W. Yu, Z. Han, and K. Liu, "Information Theoretic Framework of Trust Modeling and Evaluation for Ad Hoc Networks," IEEE J. Selected Areas in Comm., vol. 24, no. 2, pp. 305-317, Feb. 2006.
- [2]. M. Refaei, L. DaSilva, M. Eltoweissy, and T. Nadeem, "Adaptation of Reputation Management Systems to Dynamic Network Conditions in Ad Hoc Networks," IEEE Trans. Computers, vol. 59, no. 5, pp. 707-719, May 2010.
- [3]. P. Cheng, P. Rohatgi, C. Keser, P. Karger, G. Wagner, and A. Reninger, "Fuzzy Multi-Level Security: An Experiment on Quantified Risk-Adaptive Access Control," Proc. 28th IEEE Symp. Security and Privacy, 2007.
- [4]. S. Wang, C. Tseng, K. Levitt, and M. Bishop, "Cost-Sensitive Intrusion Responses for Mobile Ad Hoc Networks," Proc. 10th Int'l Symp. Recent Advances in Intrusion Detection (RAID '07), pp. 127-145, 2007.
- [5]. G. Shafer, A Mathematical Theory of Evidence. Princeton Univ., 1976.
- [6]. L. Sun, R. Srivastava, and T. Mock, "An Information Systems Security Risk Assessment Model under the Dempster-Shafer Theory of Belief Functions," J. Management Information Systems, vol. 22, no. 4, pp. 109-142, 2006.
- [7]. C. Mu, X. Li, H. Huang, and S. Tian, "Online Risk Assessment of Intrusion Scenarios Using D-S Evidence Theory," Proc. 13th European Symp. Research in Computer Security (ESORICS '08), pp. 35-48, 2008.
- [8]. K. Sentz and S. Ferson, "Combination of Evidence in Dempster-Shafer Theory," technical report, Sandia Nat'l Laboratories, 2002.
- [9]. L. Zadeh, "Review of a Mathematical Theory of Evidence," AI Magazine, vol. 5, no. 3, p. 81, 1984.
- [10]. R. Yager, "On the Dempster-Shafer Framework and New Combination Rules_1," Information Sciences, vol. 41, no. 2, pp. 93-137, 1987.

Sites References

- [11]. <http://java.sun.com>
- [12]. <http://www.sourceforge.com>
- [13]. <http://www.networkcomputing.com/>
- [14]. <http://www.roseindia.com/>
- [15]. <http://www.java2s.com/>

Author's Profile:



I. Seyed Amin Ahmadi Olounabadi Ph.D. scholar student in Computer Science and Engineering, Dept. of Computer Science and Engineering, Jawaharlal Nehru Technological University Hyderabad (JNTUH), Hyderabad, Telangana, India, Research interest: Network and Network Security, IT, Network Management

Email: aminorange2006@gmail.com



II. Mahdi Hosseini, Ph.D. scholar student in Structural Engineering, Dept. of Civil Engineering, Jawaharlal Nehru Technological University Hyderabad (JNTUH), Hyderabad, Telangana, India, Research interest: Structural Engineering, Structural Dynamics, Structural Optimization, structural design, Reinforced Concrete Structures, Earthquake Engineering

Email: civil.mahdi.hosseini@gmail.com



III. Prof. Avula. Damodaram, Vice-Chancellor Sri Venkateswara University, Tirupati, Andhra Pradesh, India.

Faculty of Computer Science & Engineering at JNTU, Hyderabad
Research interests; include Image Processing, Pattern Recognition, Network Security, Steganography and Digital Watermarking.

Email: vcsvutpt@yahoo.com